



## CAPABILITY STATEMENT





ABOUT US.  
OUR PEOPLE.  
MANAGEMENT TEAM.  
COMPANY STRUCTURE.  
ABILITY TO DELIVER.  
SYSTEMS.  
PROJECT EXPERIENCE.  
COMMERCIAL.  
EDUCATION.  
HEALTH.  
SPORT & RECREATION.  
COMMUNITY.  
RESIDENTIAL.  
FIT OUT.





# ABOUT US.

## CORPORATE HISTORY

Newpol Construction is a 35-person strong business with a stellar industry reputation. To date, the business has successfully delivered unique, innovative, and often complex projects throughout many sectors in the industry, working alongside with some of Australia's leading Architects. Directors, Alastair Grant and Lukas Konieczny, established Newpol Construction in 2012, after amassing over 24 years of joint experience in the construction industry; through the delivery of Commercial, Industrial, Retail and Multi Residential projects both in Australia and the United Kingdom.

Newpol is proud of the reputation and strong industry connections we have quickly acquired through the development of genuine relationships with our clients, architects, consultants and subcontractors. This has been achieved through the continual success of delivering complicated and challenging projects, ranging from \$700,000 to \$13,000,000. This includes both new builds and refurbishments within the private and public sectors.

Newpol is ISO accredited and boasts a strong history of repeat clientele, borne from an unwavering focus on builds of exceptional quality. We are extremely dedicated, constantly striving to expand the business and its capabilities, whilst ensuring the development of our employees skill sets to enhance the delivery of projects that emphasis on safety, programme and quality, allowing for the achievement of our client satisfaction focus. We are proud members of Industry bodies such a Master Builders of Victoria and the Australian Institute of Building of Victoria.

## FUTURE COMMITMENT

The company has now delivered a diverse range of projects incorporating lump sum, design and construct, and construction management contracts. Newpol has established itself within the industry, delivering timely, cost effective and transparent projects. The team at Newpol Construction are always actively seeking new work to develop the business. With plans to continually expand the business, our portfolio currently has capacity in it for additional project commitments.

With this in mind, we are continually developing our infrastructure and personnel resource base to ensure our capability to undertake a growing number of projects concurrently. With every job being directly overseen by one of the company Directors and Construction Manager, our clients are always provided the best service over the full project cycle, from estimating, administration, project management, site supervision and financial control. With our Directors' hands-on approach, our clients always have direct and accessible lines of communication with the company heads.





# OUR PEOPLE.

The Newpol team comprises an exceptional combination of technical expertise, extensive construction experience, along with degree and trade-qualified personnel. Newpol is committed to the continual growth and development of our people, and are proud of the supportive environment and opportunities available to team members. Our culture encourages employees in their continual professional development, hoping to inspire passion and commitment within the construction industry.

## COLLABORATION

Teamwork is imbedded within Newpol's company culture. We promote the flow of shared expertise and knowledge, by encouraging employees to communicate collaboratively, leading to efficient decision-making processes and innovative idea creation. Our company structure concentrates on an open and hands-on management style, allowing for leadership teams to mentor and guide, whilst further encouraging all employees to offer new ideas and insights. Our strategy of employee inclusivity enhances the company's ability to respond and adapt to the diverse and changing nature of the construction industry through being able to rely on a supportive network of knowledge and experience. Such a structure has allowed for all team members, throughout all departments, to share and promote Newpol's direction and purpose, by strongly focusing on the achievement of exceptional client and stakeholder satisfaction.

## DIVERSITY ADDING VALUE

We feel privileged with the opportunity to provide a supportive and encouraging workplace for the next generation of builders, where employees feel inspired and motivated through our strong focus on teamwork. Newpol is committed to the promotion of an inclusive, diverse and equal workplace environment for all. We are excited for the future of this industry and to continue to deliver exceptional projects through our highly skilled and passionate project teams.





# MANAGEMENT TEAM.

**Alastair Grant**  
Commercial Director



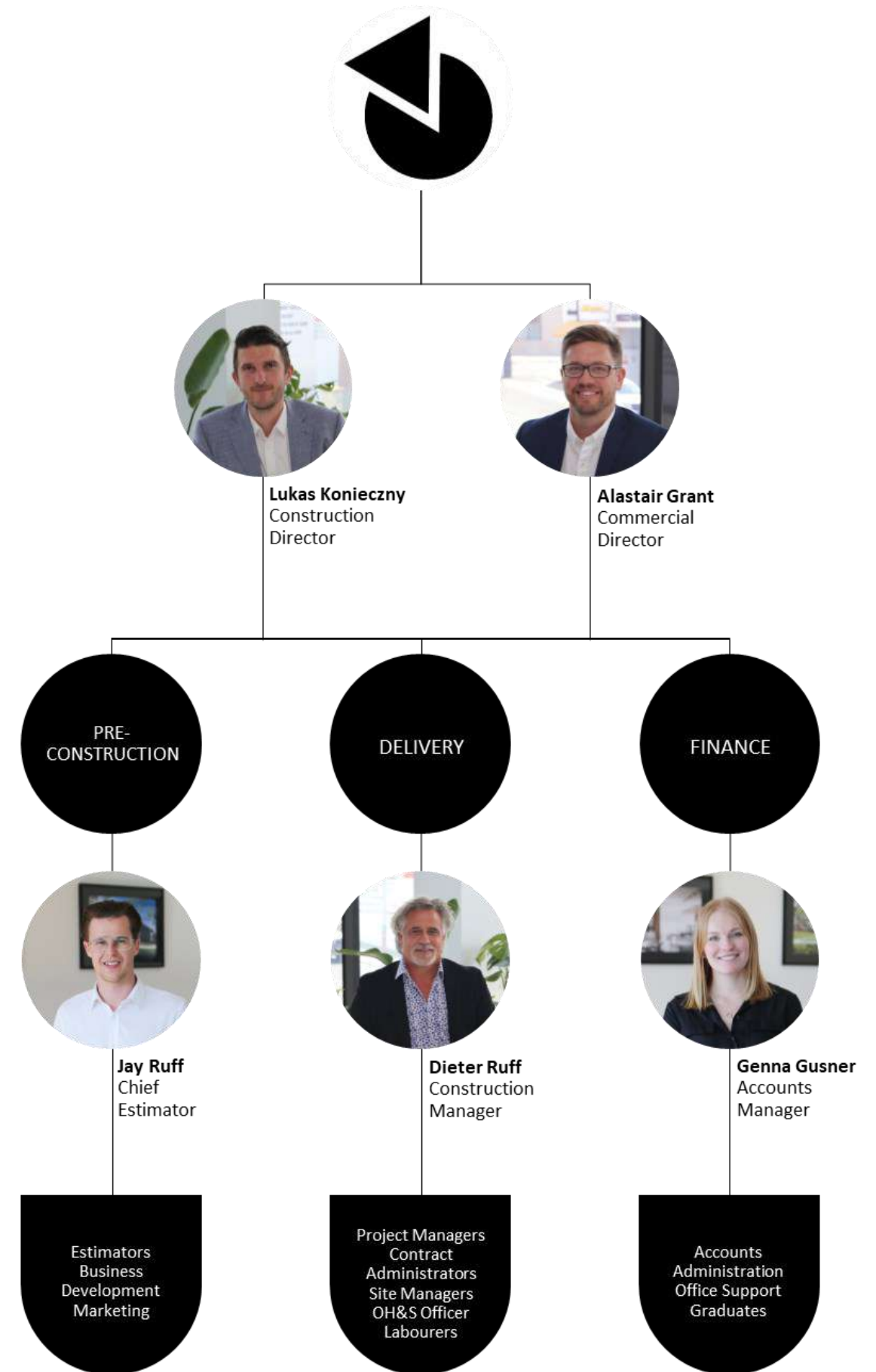
**Lukas Konieczny**  
Construction Director



**Dieter Ruff**  
Construction Manager



## COMPANY STRUCTURE.





# SYSTEMS.

## OCCUPATIONAL HEALTH & SAFETY

At Newpol we create a positive safety culture and have developed extensive safety and risk management systems for continuous safety awareness and improvements. Our management team is heavily focused on company-wide safety strategies which inspires and motivates employees and sub-contractors to act safely and ensure a safety attitude throughout all our operations. Newpol are committed to incorporating OH&S Management into all aspects of our business and providing safety training and awareness for all our staff.

## QUALITY MANAGEMENT SYSTEM

Newpol is committed to a Integrated Management System (IMS) to manage all aspects of our business in accordance with ISO 9001 – Quality Management Systems. Our Quality Policy is designed to ensure that we continually improve the quality of our business services by our objectives and targets.

## ENVIRONMENTAL MANAGEMENT SYSTEM

Newpol is committed to conducting our business in a manner that protects the quality of the environment in our communities with an emphasis on using preventive measures. Our Environmental Management system conforms to the relevant legislative regulatory requirements, Codes of Practice and to ISO 14001 Environmental Management Systems.

## PROJECT & FINANCIAL MANAGEMENT SYSTEMS

Our teams are involved an rigorous project reporting cycle to ensure program and financial control over all projects. This enables upper management to closely monitor operations across the board to enable strategic development.

Our company utilises the following industry-leading software:

- Buildsoft for estimating
- Aconex for project correspondence and document control
- iTWOcx for integrated document control
- Jobpac by Viewpoint for financial accounting and project management





LIVE ENVIRONMENT SPECIALISTS.

90+  
DELIVERED  
PROJECTS.

CLIENT  
SATISFACTION  
SCORE  
4.8/5.0



- Education & Tertiary
- Multi Residential
- Commercial
- Community / Sport & Rec
- Retail
- Early Learning
- Health
- Hospitality

70%

REPEAT WORK.

< CLIENT FIRST MENTALITY >





COMMERCIAL.





PROJECT EXPERIENCE.

COMMERCIAL.



Project	Willow Urban Retreat, Armadale
Architect	Design Collective Meme
Client	Willow Urban Retreat
Scope	This project involved construction of a multi-story wellness facility to cater for the ever-growing Health and Wellbeing industry in Melbourne. The build incorporated a ground floor wholefoods cafe, yoga studio, spa retreat and detox consulting suites with a high-level finish throughout. Willow was shortlisted in the Health and Wellness Interior Dezeen Awards, Eat Drink Design Awards for Best Café Design, as well as an entrant in the Master Builder and AIB Professional Excellence Awards.







## PROJECT EXPERIENCE.

### COMMERICAL.



**Project** 57-59 High Street, Wallan – Commercial Development

**Architect** DCA Design

**Client** Norcen Financial Services

**Scope** This build involved construction of a new two-story office building located in the heart of Wallan. The unique building designed by DCA Design showcases vibrant coloured external windows. The development overcame stringent access conditions for the installation of precast panels. The build included subsequent fit out of the Bendigo Bank, the office for the Local Member of Parliament, and GOTAFE La Trobe Satellite Campus. The total build came to \$5 million.



PROJECT EXPERIENCE.

COMMERCIAL.



**Project** Bendigo Bank, Wallan

**Architect** DCA Design

**Client** Norcen Financial Services

**Scope** The Bendigo Bank construction was a stage of the greater Wallan development. It features a double story skylight and visibility to floors above that provides light to the back of the branch. This build included a main board room and other meeting rooms. The branch seamlessly ties into the other GOTAFE and local MP office tenancies.



**Project** Autonomy Store, Emporium Shopping Precinct

**Architect** Ha. Architecture

**Client** Autonomy Store

**Scope** Works consisted of the fit out of a retail clothing tenancy Autonomy. Initially given 6 weeks to carry out the works, delays by the base building contractor resulted in Newpol Construction only having 3 weeks to carry out our contract works. Despite this, we were able to hand over the tenancy to the client in time for the first day of trade for the centre. This led to Newpol Construction being nominated for a further three tenancies in the precinct.



**Project** Cook Street, Flinders Retail Tenancy

**Architect** Cera Stribley Architects

**Client** Private Developer

**Scope** The two retail tenancies were a part of the Flinders Place mixed use development. The space features polished concrete floors and expansive windows. The tenancy now houses the Everywhen Artspace.



**Project** Winning Appliances, Chadstone

**Architect** Cera Stribley Architects

**Client** Winning Appliances

**Scope** This Chadstone store features high-end finishes including copper coffered ceilings, a mixture of X-Bond and stone walls surrounding detailed stone joinery. Newpol is working closely with the architect and client to accommodate design requirements. The project was subject to an extremely tight program with Newpol being able to successfully deliver the \$1.7 million fit out in nine weeks.





# NON- ATTACHED FOUNDATION





PROJECT EXPERIENCE.

EDUCATION.



Project	Fountain Gate Secondary College
Architect	Clarke Hopkins Clarke
Client	Department of Education & Training
Scope	Construction of a new Science, Technology and media hub. The science hub will provide physics, chemistry and general science labs with relevant prep areas. The technologies area now has materials, machining and adaptable project spaces while the design component incorporates studios, IT hubs and dark rooms. All these specific areas work as satellites around central collaborative and open learning group spaces. External works for the project includes 500m <sup>2</sup> of hard and soft landscaping to tie the new building into the existing facility. This project came to a value of \$3.6 million.







**PROJECT EXPERIENCE.**

**EDUCATION.**



<b>Project</b>	<b>Ilim College Library Refurbishment</b>
<b>Architect</b>	MSM & Associates
<b>Client</b>	Ilim College
<b>Scope</b>	Newpol were awarded the contract for the Library Refurbishment at the Ilim College Located in Dallas Victoria. The Refurbishment of the existing 550m <sup>2</sup> Library is the first stage of the College's Master Plan to modernise all existing building structures to accommodate the rapid growth of the community.





## PROJECT EXPERIENCE.

### EDUCATION.



#### Project

St. Matthew's Parish Primary School

#### Architect

Harrison & White Architects

#### Client

The Roman Catholic Archdiocese

#### Scope

In March 2020, Newpol completed the administration building refurbishment at the St. Matthew's Parish Primary School in Fawkner, Victoria. The Refurbishment of the existing 500m<sup>2</sup> administration building also incorporates the installation of a new lift shaft and lift servicing the first floor. The project feature piece is the façade system extended to the existing building which incorporates an aluminium cladding system with structural steel sub-structure.

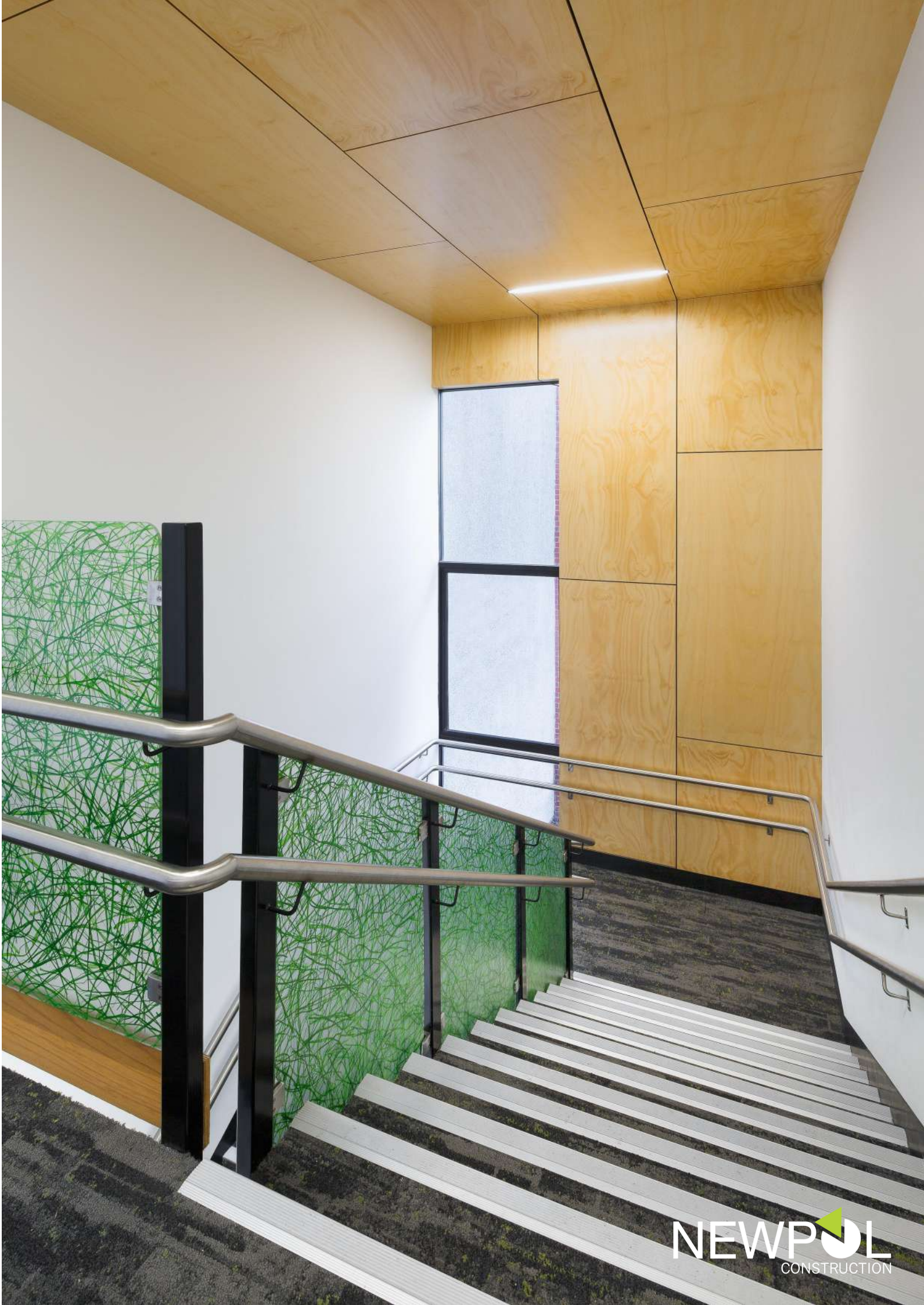


PROJECT EXPERIENCE.

EDUCATION.



Project	Brunswick North Primary School
Architect	Crosier Scott Architects
Client	Department of Education & Training
Scope	This \$3.1 million project was Stage 1 of their proposed master plan to intergrade state of the art finishes within the existing 100 year-old structure. The large scope of works outside the general refurbishment includes the full replacement of the 2000m <sup>2</sup> roof, external façade upgrade and landscape and external works.







## PROJECT EXPERIENCE.

### EDUCATION.



<b>Project</b>	<b>Box Hill High School – Performing Arts Hub</b>
<b>Architect</b>	Strata PNA
<b>Client</b>	Box Hill High School
<b>Scope</b>	The ground floor incorporates large music, media and drama classrooms as well as rehearsal areas. There were incredibly stringent acoustic requirements to prevent sound attenuation. The first floor is a large performing arts hall with reticulated seating system, stage area, box office, entry hall and amenities. A new elevated walkway provides access to the main school building. The outside facade is clad in adjustable perforated metalwork screens.



<b>Project</b>	<b>Aitken College</b>
<b>Architect</b>	Hayball Architecture
<b>Client</b>	Aitken College
<b>Scope</b>	This project involved the construction of a Kitchen Garden Facility designed by Hayball Architecture. The project includes a full new build, which incorporates a high-level finish kitchen and dining area for the students. This first stage of construction for the Aitken College is to kick off their 20-year master plan with their rapidly increasing number of students.



<b>Project</b>	<b>St. John's Regional College, Dandenong</b>
<b>Architect</b>	Y2 Architecture
<b>Client</b>	The Roman Catholic Archdiocese
<b>Scope</b>	Newpol has completed the refurbishment of De La Salle Building and associated external works for St. John's Regional College. Designed by Y2 Architecture, the project required the relocation of the administration department from the rear of the property to the front with an upgrade to staff facilities. With extensive coordination required to work within two live school environments, the ground floor and second floor remained operational.



<b>Project</b>	<b>Newport Lakes Primary School</b>
<b>Architect</b>	Minx Architecture
<b>Client</b>	Department of Education & Training
<b>Scope</b>	This \$3.5 million new build and refurbishment had a significant amount of contaminated soil creating latent conditions. It involved diligent removal whilst managing a live school environment. The main scope of works incorporated a new 550m <sup>2</sup> multipurpose music and sports hall and a new 600m <sup>2</sup> 10 classroom learning centre which incorporates bathroom amenities.



PROJECT EXPERIENCE.

EDUCATION.



**Project** Christ Our Holy Redeemer Primary School

**Architect** Crosier Scott Architects

**Client** The Roman Catholic Archdiocese

**Scope** Newpol Construction have completed the staged refurbishment and new library construction for the Christ Our Holy Redeemer Primary School. The project included a new two-level building incorporating a library and general learning areas, along with the refurbishment of the existing classrooms. The project value was \$2 million.



**Project** St Joseph's Catholic Primary School, Crib Point

**Architect** Crosier Scott Architects

**Client** The Roman Catholic Archdiocese

**Scope** The rapidly expanding student numbers at St Joseph's Crib Point led to the requirement for a new classroom building to create a new dynamic, flexible learning facility for students. The new building also supports the school's philosophy toward collaborative learning with rooms also opening out to dedicated covered external learning spaces which enable further teaching options for staff.



**Project** St Joseph's Primary School, Boronia

**Architect** Baldasso Cortese

**Client** The Roman Catholic Archdiocese

**Scope** St Joseph's in Boronia has been transformed from a typical early 1960s school building into a new, light-filled, contemporary learning centre. The large Skillion roof lends a graphic silhouette to the multi-purpose space. It incorporates three general learning spaces, two large open flexi teaching areas, staff room, kitchenette, amenities block and staff room. It also incorporates an internal courtyard and external landscaping. This project value was \$2.3 million.



**Project** Glenallen Specialist School

**Architect** FMSA Architecture

**Client** Department of Education & Training

**Scope** Newpol were engaged to complete the stringent and complex refurbishment of changeroom facilities at Glenallen School for kids with disability. Newpol found it very rewarding to be a part of this project which included the upgrade and refurbishment of the wet area changerooms and new hoist systems to enable easier use off the pool facilities. This project incorporated staged refurbishments to work within the school's sensitive requirements.







## PROJECT EXPERIENCE.

### EDUCATION.



<b>Project</b>	<b>Valkstone Primary School</b>
<b>Architect</b>	Clarke Hopkins Clarke
<b>Client</b>	Department of Education & Training
<b>Scope</b>	Works included a new learning area incorporating five learning spaces and amenities block. In addition to this, there was a staged reconfiguration and fit out of approximately 1200m <sup>2</sup> of existing learning space including library, art room, IT and 8 classrooms. The project also included a large external works package, new car parking to accommodate 30 new car spaces, relocation of several modular buildings and extensive hard and soft landscaping.



<b>Project</b>	<b>Gilson College Early Learning Centre</b>
<b>Architect</b>	Kneeler Design Architects
<b>Client</b>	Gilson College
<b>Scope</b>	Newpol Construction have completed the construction of Gilson College's Early Learning Centre. The project located in Taylors Hill includes the addition of early learning within the college campus. The project included a new 550m <sup>2</sup> childcare along with a 660m <sup>2</sup> asphalt carpark and access road. The project value came to \$2.8 million



<b>Project</b>	<b>Sunrise Kindergarten, Thornbury</b>
<b>Architect</b>	Content Studio
<b>Client</b>	Sunrise Kindergarten
<b>Scope</b>	Newpol was engaged by a community group to build a new kindergarten in Thornbury. With a focus on a philosophy of holistic learning the design of both the internal and external areas had a strong focus on providing a homely feel rather than that which is generally provided. There was a strong focus on using renewable materials as seen in the bamboo flooring and joinery.



<b>Project</b>	<b>Kew Childcare Centre</b>
<b>Architect</b>	Real Space Creative
<b>Client</b>	Petit Early Learning Journey
<b>Scope</b>	This project involved conversion of an existing two story office building with basement. Newpol installed a third story and roof top garden play area. There was a full reconfiguration and fit out of the ground and first floor to accommodate 140 children. Two new emergency stairwells and a lift shaft were cut into the existing building to comply with new requirements. The exterior of received new cladding and full perimeter glazing to level three.



HEALTH.





PROJECT EXPERIENCE.

HEALTH.



Project	Mornington Specialist Dental Clinic
Architect	Cera Stribley Architects
Client	Victorian Oral & Facial Surgeons
Scope	This project includes a 300m <sup>2</sup> ground floor dental clinic consisting of treatment rooms, surgery and recovery areas, sterilisation room, offices, a staff kitchen, toilet amenities and a high-end reception area. The installation of the dental equipment required detailed positioning and design to support surgeons' access and usability. Beneath the clinic, the project involved a basement carpark for staff and patients.





PROJECT EXPERIENCE.

HEALTH.



Project	Cabrini Hospital – Paediatrics & Vascular Ward
Architect	Design Inc
Client	Cabrini Hospital
Scope	Engaged to deliver two cutting edge new wards at Cabrini Hospital which provide patients with the latest medical technology. Working within an extremely sensitive work environment, one of the biggest challenges was working adjacent to the ICU. Extensive infectious control parameters were implemented while high level stakeholder planning was required for staged disconnection and upgrades of switchboards and other services which directly affected ICU.



PROJECT EXPERIENCE.

HEALTH.



Project	Cabrini Hospital – Cardiac Ward
Architect	Design Inc
Client	Cabrini Hospital
Scope	This hospital refurbishment consisted of new consulting suites and examination rooms, amenities, administration offices, and a modernised waiting area. The project included provision of extensive water pipe work to service the upcoming \$80 million new facility. Pipes run through the infectious disease mechanical plant room, new cardiac suites, the maternity facility through the roof to the top plant rooms.





# SPORT & REOC.





PROJECT EXPERIENCE.

SPORT & RECREATION.



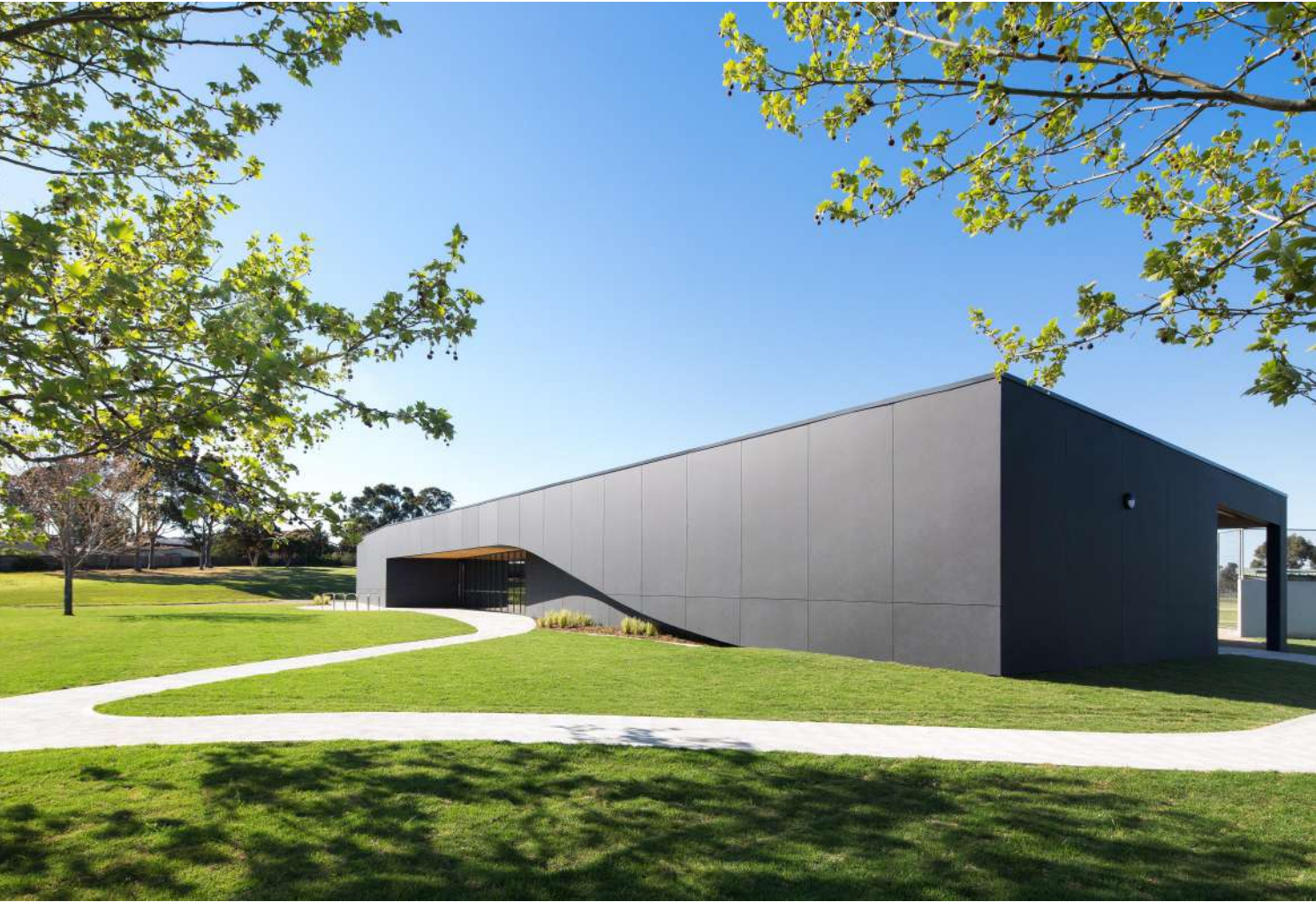
Project	Seaford North Primary School
Architect	MSM & Associates
Client	Department of Education & Training
Scope	Newpol have completed a new \$4.8 million Sport & Performing Arts Centre at the Seaford North Primary School. The sports stadium incorporates professional size basketball, netball, volleyball courts and other sporting amenities. Adjacent to the sports stadium are new art and music classrooms, toilets and a commercial kitchen. The contract also included a large external works package involving asphalt basketball courts, works to existing ovals and landscaping.





PROJECT EXPERIENCE.

SPORT & RECREATION.



Project	Robert Booth Pavilion, Dandenong
Architect	CO-OP Studio
Client	City of Greater Dandenong
Scope	Newpol was engaged by the City of Greater Dandenong to simultaneously deliver two multipurpose sporting pavilions, Robert Booth and Alex Nelson Pavilions. This new state of the art facility will house the baseball and softball clubs. The pavilion comprises multiple change room and bathroom facilities, commercial kitchens, social rooms as well as fully accredited umpire's facilities. Encompassing high-end finishes such as Trespa paneling imported from Holland, Strand-board and pre finished exposed Hyne beams.



PROJECT EXPERIENCE.

SPORT & RECREATION.



Project	Alex Nelson Pavilion, Springvale
Architect	CO-OP Studio
Client	City of Greater Dandenong
Scope	Newpol was engaged by the City of Greater Dandenong to simultaneously deliver two multipurpose sporting pavilions, Robert Booth and Alex Nelson Pavilions. This new sporting pavilion will house the cricket and football clubs. The facility comprises multiple change rooms, commercial kitchens, and social rooms. Encompassing high-end finishes such as Longline standing seam cladding, Strandboard and pre finished exposed Hyne beams. An extensive civil package was also included to improve the viewing platform of the pavilions and to triple the size of the carparking facility.

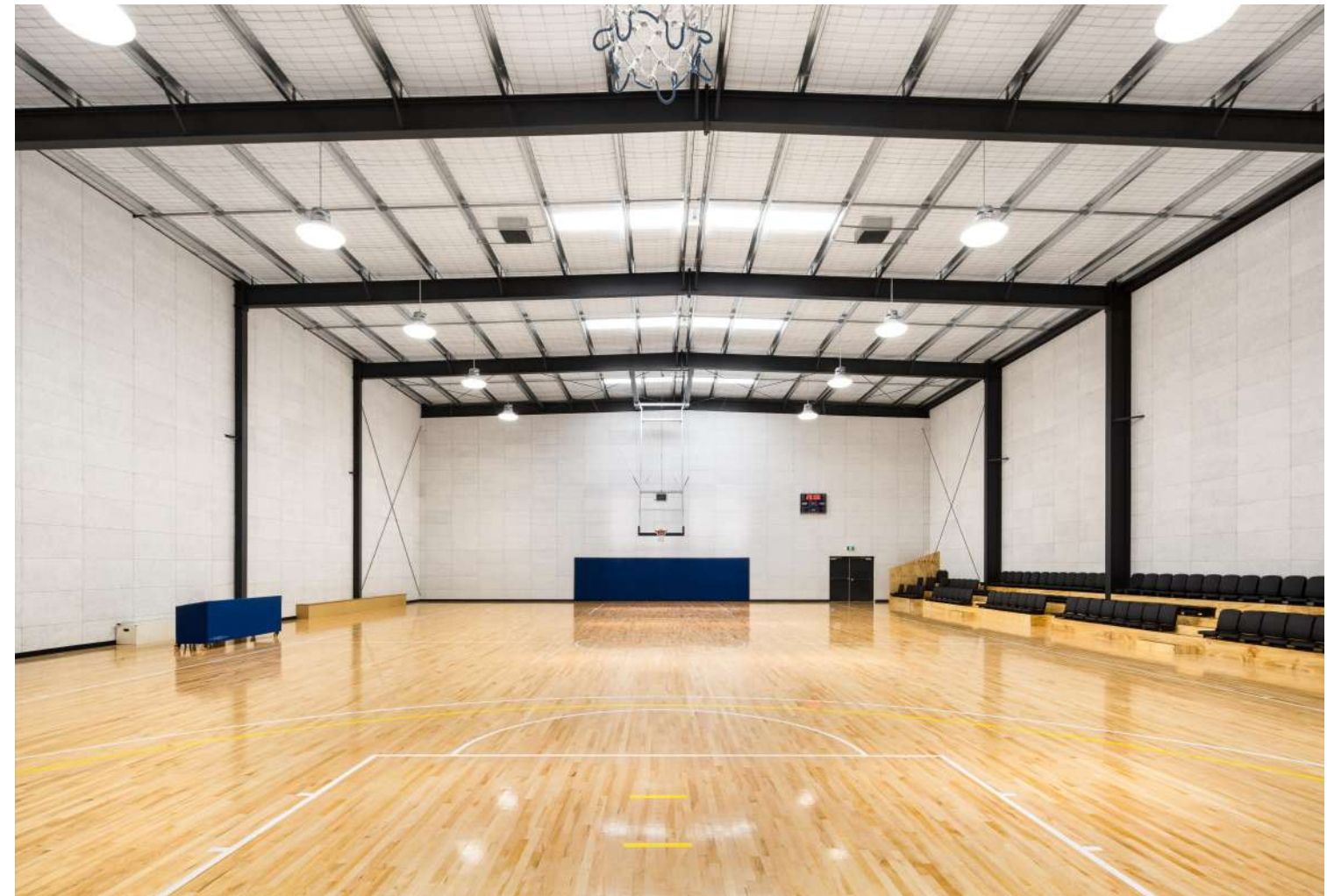






## PROJECT EXPERIENCE.

### SPORT & RECREATION.



<b>Project</b>	Sheahans Road Basketball Stadium, Bulleen
<b>Architect</b>	Centrum Architects
<b>Client</b>	Manningham City Council
<b>Scope</b>	This new basketball stadium is the training facility of the Bulleen Boomers Basketball team. The build incorporated state of the art Action Pro Air flooring system to replicate NBA specifications, commercial kitchens and Hera design acoustic panels imported from Austria. The value of this project was \$1.9 million.



# COMMUNITY.





PROJECT EXPERIENCE.

COMMUNITY.



Project	DHHS Community Care Units, Pakenham
Architect	Bent Architecture
Client	Department of Health & Human Services
Scope	Newpol were awarded the \$3.3 million contract for this facility, which will be used as youth crisis accommodation for the Department of Health & Human Services. The development consists of eight independent living units, a multi-purpose community building and associated external works such as communal gardens.





RESIDENTIAL.





PROJECT EXPERIENCE.

RESIDENTIAL.



Project	Albert Street Mansion, East Melbourne
Architect	Cera Stribley Architects
Client	Private
Scope	This project involved a full refurbishment of a three-story heritage mansion. The standout element of this project consisted of adding additional floor forming a new rooftop terrace overlooking the Fitzroy Gardens and the city of Melbourne. The house includes sixteen functional rooms, including two kitchens, three enormous bedrooms, three bathrooms, a walk-in dressing room and meeting rooms. Blending old with new, the period restoration is also coupled with







## PROJECT EXPERIENCE.

### RESIDENTIAL.



**Project** Fox Estate, Toorak

**Architect** FGR Architects

**Client** Private

**Scope** This project incorporates three large townhouses on a heritage overlay estate. Each apartment comprising of 380m<sup>2</sup> internal space and 200m<sup>2</sup> of external space with private pools. Constructed to the highest level, the bathrooms are floor to ceiling marble, and Roger Seller fixtures throughout. Corian bench tops feature, along with 2 Pack and veneer kitchens and robes. The project value totalled \$5.4 million.



PROJECT EXPERIENCE.

RESIDENTIAL.



Project	Flinders Place
Architect	Cera Stribley Architects
Client	Private
Scope	Located in the coastal town of Flinders on the Mornington Peninsula this project provides new retail and multi-residential amenities to the town. Sitting on over 1000m <sup>2</sup> of land, this development includes two retail tenancies, three apartments, three townhouses, and underground carparking. Hipped roofs provide extremely generous ceiling heights and abundant natural light. The external timber cladding is a key feature of this project which will soften the facade over time.







## PROJECT EXPERIENCE.

### RESIDENTIAL.



**Project** Fairfield Apartments

**Architect** Strata PNA Architects

**Client** Private

**Scope** This multi-residential project incorporates eight large, two bedroom apartments with a 550m<sup>2</sup> basement. Designed to meet strict urban requirements as a result of a lengthy VCAT process, the result is a clever exterior design to appear to be a large house rather than apartments. Venetian plaster common areas, Two Pack joinery and veneer entry doors are some of the design highlights encountered on this project.





## PROJECT EXPERIENCE.

### RESIDENTIAL.



<b>Project</b>	<b>Caroline Street, South Yarra</b>
<b>Architect</b>	Ilario G Cortese Architects
<b>Client</b>	Private
<b>Scope</b>	This partial demolition and three-story extension came with a variety of challenges, including the installation of a basement garage and retention system around an existing heritage listed structure. This high finish home features an internal lift, stone slab bathrooms, polished resin floors and Corian kitchen. The external finish also incorporated rock coat polished render finish to replicate off-form concrete.



<b>Project</b>	<b>Bay Road, Sandringham</b>
<b>Architect</b>	FIGR Architects
<b>Client</b>	Private
<b>Scope</b>	This tight, 205m <sup>2</sup> site located within Bay Rd shopping precinct in Sandringham includes ground floor retail and entry lobby which leads to second and third floor apartments, with a roof top terrace. The structure spans boundary-to-boundary with rear access providing automated stacker basement car-parking to all tenants. The tight space and with Bay Rd being a VicRoads controlled arterial, it provided many challenges in construction.



<b>Project</b>	<b>60 Regent Street, Richmond</b>
<b>Architect</b>	David Luck Architecture
<b>Client</b>	Private
<b>Scope</b>	Born from an existing two store factroiette in inner city Richmond, this four story residential development comprises two single story apartments and a large three story penthouse. Poliform joinery, Roger Seller fittings and fixtures, Royal Oak flooring and floor to ceiling marble slabs in bathrooms showcases the extremely high level of finish capable of delivery by Newpol Construction. A further design requirement of the client was to provide a nod to the existing industrial history of the building which was achieved with the exposed brick walls, the exposed concrete soffits and honed concrete floors. Cutting edge intelligent electrical system allows full building automation throughout.





THE  
FOOT





PROJECT EXPERIENCE.

FIT OUT.



Project	GOTAFE La Trobe, Wallan Campus
Architect	Zwei
Client	Tafe Victoria
Scope	The GOTAFE satellite La Trobe campus is a purpose built, digitally connected contemporary learning facility, designed to meet the growing needs of the Wallan community. This fit out was an extension of the greater development that houses several tenancies. The fit out was managed as a separate contract, with all works being completed simultaneously to achieve program requirements. The fit out includes colourful quiet pods for collaboration or focused study.







PROJECT EXPERIENCE.

FIT OUT.



Project	Savoy Tavern, Melbourne
Architect	Ha. Architects
Client	Savoy Tavern
Scope	Promoted by the Melbourne Lord Mayor to re-activate the corner of Spencer and Bourke St in the city, this project was to fit-out the iconic Melbourne venue that had been shut for nearly 25 years. The project was completed over a 10-week program and faced the challenge of re-newing the premises with-in what was initially tight budgetary constraints.



Project	Touchwood Café, Richmond
Architect	Therefore Studio
Client	Touchwood Café
Scope	This joint venture incorporated many design management requirements by Newpol to ensure the final outcome for the client was achieved with consideration to a tight budget and time frame. This demonstrates our ability to understand our clients needs and deliver a successful outcome with limited documentation. The main project elements were full solid timber joinery and integrating a new commercial kitchen into a pre-existing space.



Project	The George Ballroom, St Kilda
Architect	N/A Refurbishment
Client	Heritage Victoria
Scope	This Heritage restoration involved returning this former Melbourne icon built in 1857 to its former glory. Exposed to years of water damage the existing ornate lathen plaster ceiling had collapsed and required restoration. After repairing the cause of the water ingress, Newpol had to structurally reinforce what remained of the ceiling. Resin casts were taken of all the cornices, moulds and ornaments to be able to replicate and fabricate



Project	Robinson Bookstore, Various Locations
Architect	Hot Black
Client	Robinson Bookstore
Scope	Newpol built the state-wide roll out of stores in Chadstone, Highpoint, Eastland and Northland shopping centres, Werribee Plaza and Melbourne Emporium. Each project was delivered within 3 weeks to meet the tight time parameters of shopping centre openings. This therefore required extremely high levels of co-ordination and programming . All joinery was pre-fabricated to ensure that it was ready for install soon after site possession.





NEWPOL  
CONSTRUCTION

[WWW.NEWPOL.COM.AU](http://WWW.NEWPOL.COM.AU)

